

Elementary School Campus

Columbus, Ohio



Location: Ohio

Size: 58,000 ft²

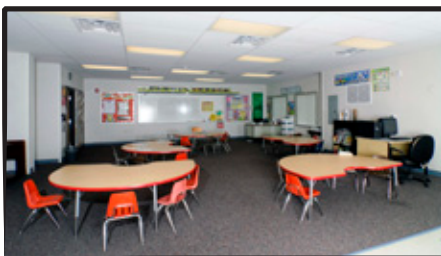
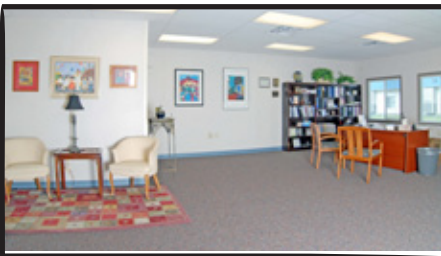
Challenge:

Established in 1999, Millennium Community School, a charter school located in Columbus, Ohio serves students in grades K-8. Millennium's basic educational philosophy states that every child can learn, if taught appropriately. To properly execute this philosophy, the school required an adequate facility. Millennium's previous facilities were located in a complex of leased and aging buildings. When the end of the lease approached, Millennium was had the option to purchase, but the location was not large enough for the school to expand. To establish a new campus, time and budget were the top priority for the Millennium School Board.

Solution:

IMS and Stevens Architects designed a 58,000 square foot building solution, based on standard IMS Specifications, which offered benefits to the schedule and project cost. The property chosen was located with a well-established and highly respected church. The development and construction took less than 8 months to complete after zoning approval and construction permits were issued. IMS oversaw all aspects of construction from conception to completion.

IMS worked with Whitley Manufacturing and Mark Line Industries to construct the building, which consists of 37 classrooms, offices, conference rooms, work rooms, warming kitchen, cafeteria, and multi-purpose room. Each classroom is controlled by an energy efficient HVAC system with a CO2 sensor to maintain indoor air quality. The exterior is finished in a cost-effective combination of split face masonry and horizontal cement board lap siding. The new facility allows Millennium to fulfill their goal of building a community educational environment dedicated to high academic standards where young students can succeed.



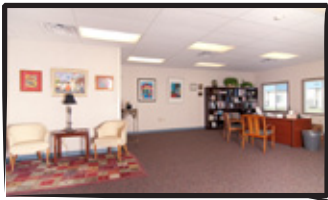
Elementary School Campus

Columbus, Ohio



Location: Ohio

Size: 58,000 ft²




InnovativeModular
solutions